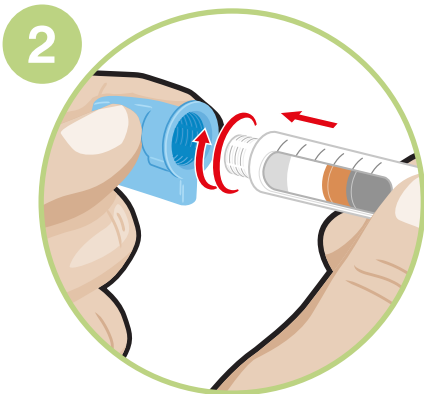


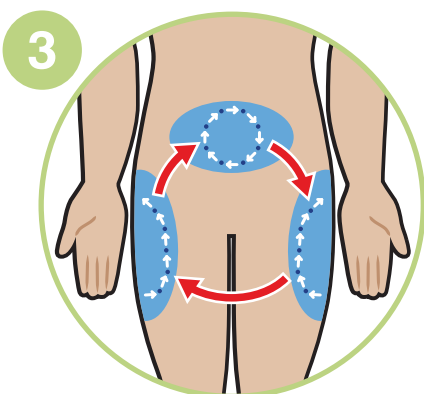
Good Injection Guide



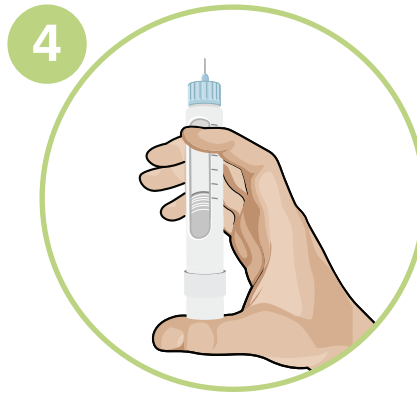
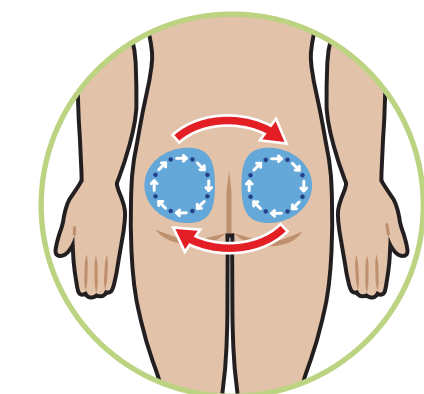
1 First wash your hands with soap and water.



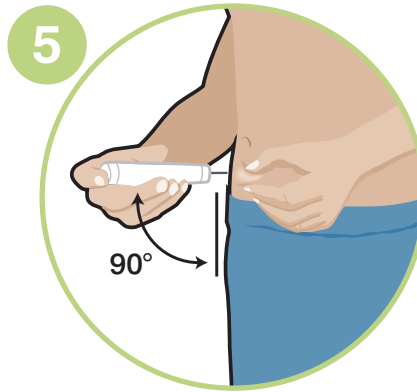
2 Remove seal and push the new needle straight onto the pen. Screw tight.



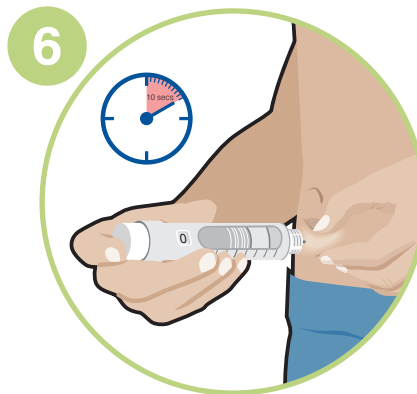
3 Make sure you rotate between injection sites.



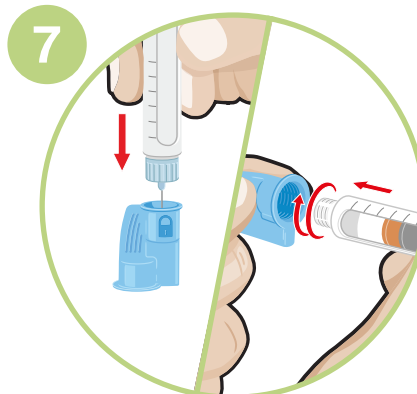
4 Prime your pen as recommended and dial the required dose.



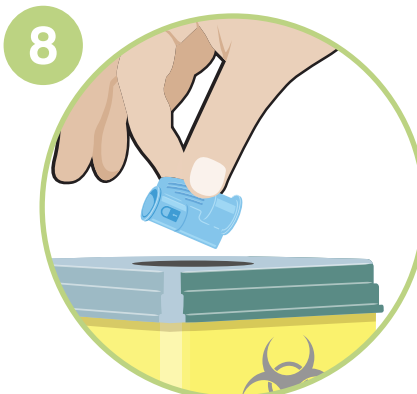
5 If recommended, pinch/fold your skin and insert the needle at a 90° angle.



6 Push the button down completely. Keep the button pressed down, count slowly to 10 before removing.



7 Remove the needle and place it in the removal system until it clicks using one or two handed techniques.



8 Dispose of the needle in a suitable sharps container.